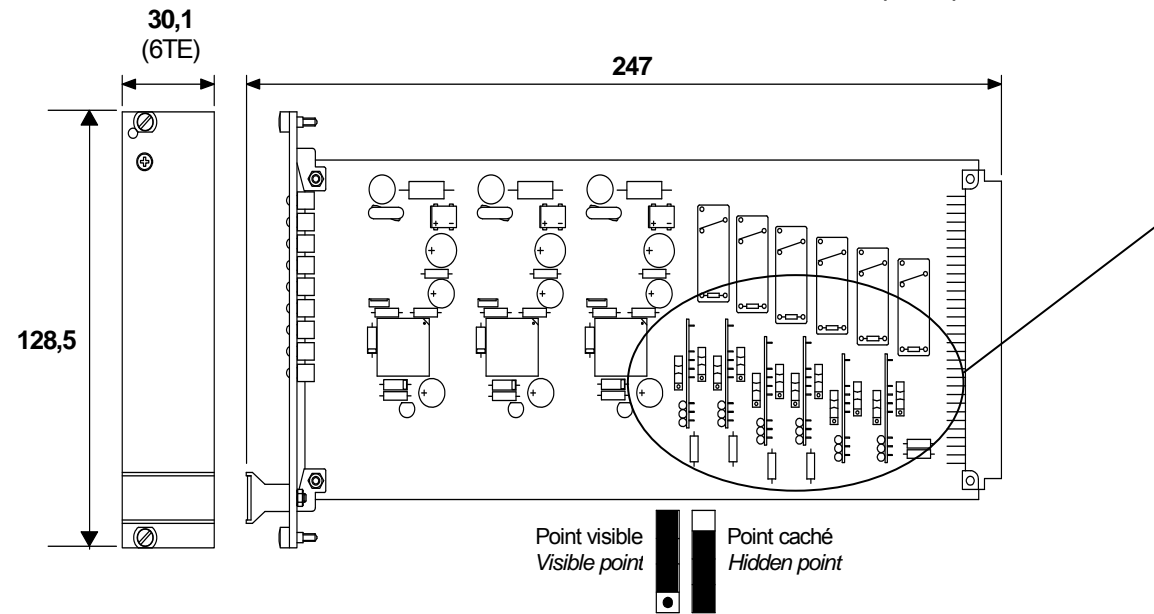


ENCOMBREMENT / DIMENSION (mm)



PROGRAMMATION / PROGRAMMING

1) CHOIX DU TYPE D'ENTRÉE

INPUT PROGRAMMING

ENTRÉE PAR DP / INPUT BY PROXIMITY SENSOR



ENTRÉE PAR CONTACT / INPUT BY SWITCH



2) CHOIX DE LA FONCTION

FUNCTION PROGRAMMING

DP NON ACTIVE
NON ACTIVATED DETECTOR
I > 2.2 mA



RELAIS AU REPOS / RELAY OFF

RELAIS AU TRAVAIL / RELAYS ON

DP ACTIVE
ACTIVATED DETECTOR
I < 1mA



RELAIS AU TRAVAIL / RELAY ON

RELAIS AU REPOS / RELAY OFF

CONTACT FERMÉ

SWITCH ON



RELAIS AU REPOS / RELAY OFF

RELAIS AU TRAVAIL / RELAY ON

(INVERSE / REVERSE)

(DIRECT)

CONTACT OUVERT

SWITCH OFF



RELAIS AU TRAVAIL / RELAY ON

RELAIS AU REPOS / RELAY OFF

(INVERSE / REVERSE)

(DIRECT)

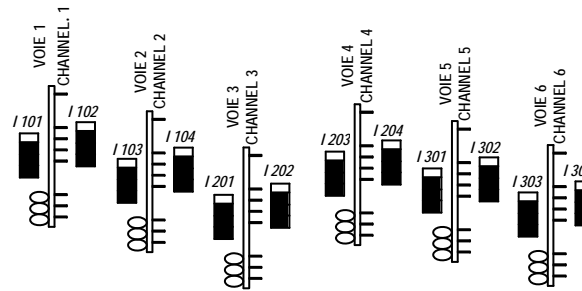
NOTA : AU DÉPART D'USINE, TOUS LES INTERRUPTEURS SONT POSITIONNÉS EN ENTREE CONTACT ET REPETITEUR DIRECT

NOTE : FROM FACTORY, SWITCHES ARE IN SWITCH POSITION AND DIRECT REPEATER

CODIFICATION

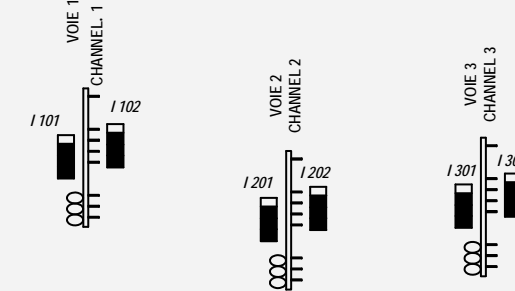
Modèle / Model		Option	Alimentation Power supply		
CRN		0	Sans option without option	0	230 VAC
	200	DT	Avec détrompage With keying pin	1	110VAC
	300	A*	Icc = 5mA	2	24/48 VDC
	600	**	Autre sur demande Other on request		

CRN600



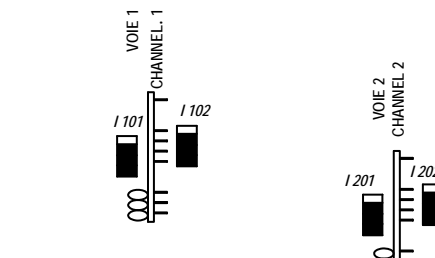
VOIE CHANNEL	SWITCH ENTREE INPUT	SWITCH FONCTION FUNCTION
1	I 101	I 102
2	I 103	I 104
3	I 201	I 202
4	I 203	I 204
5	I 301	I 302
6	I 303	I 304

CRN300



VOIE CHANNEL	SWITCH ENTREE INPUT	SWITCH FONCTION FUNCTION
1	I 101	I 102
2	I 201	I 202
3	I 301	I 302

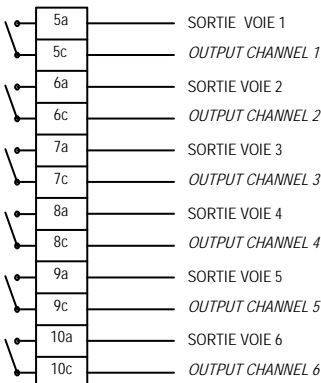
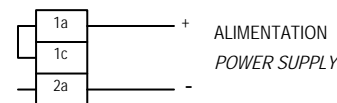
CRN200



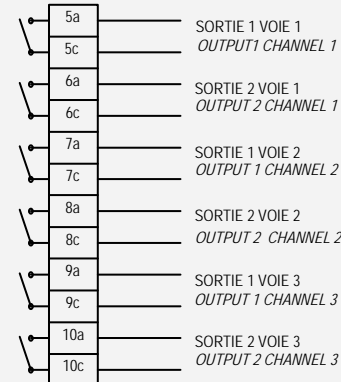
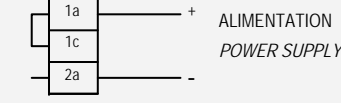
VOIE CHANNEL	SWITCH ENTREE INPUT	SWITCH FONCTION FUNCTION
1	I 101	I 102
2	I 201	I 202

RACCORDEMENT / WIRING

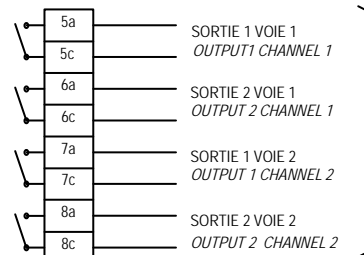
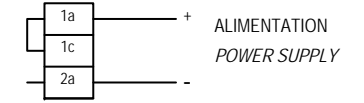
ZONE SURE SAFE AREA



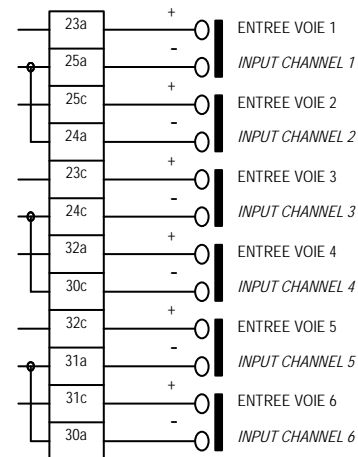
ZONE SURE SAFE AREA



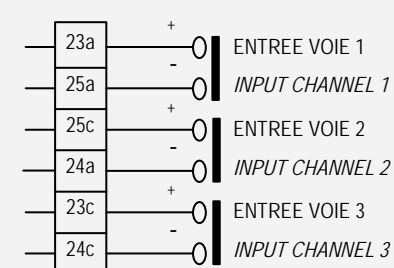
ZONE SURE SAFE AREA



ZONE DANGEREUSE HAZARDOUS AREA



ZONE DANGEREUSE HAZARDOUS AREA



ZONE DANGEREUSE HAZARDOUS AREA

