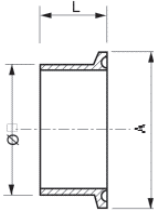


■ Ensemble CLAMP

Ferrule à souder Inox 316L (Ra<0,8µm)
Collier Inox 304
Joint E.P.D.M. (-40...+130°C)



CLAMP		Ø	L	A	Code
1"	DN 25	25.4	28.6	50.5	A3605-EP
1" ½	DN 38	38.1	28.6	50.5	A3600-EP
2"	DN 51	50.8	28.6	64	A3601-EP
2" ½	DN 63	63.5	28.6	77.5	A3602-EP

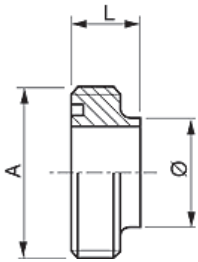
■ Ensemble CLAMP

Welding ferrule 316L st.st. (Ra<0.8µm)
Heavy duty clamp 304 st.st.
Gasket E.P.D.M. (-40...+130°C)



■ Ensemble SMS

Ferrule à souder Inox 316L (Ra<0,8µm)
Joint E.P.D.M. (-40...+130°C)



SMS		Ø	L	A	Code
1" ½	DN 38	38.1	23	60x6F"	A3610-EP
2"	DN 51	50.8	23	70x6F"	A3611-EP

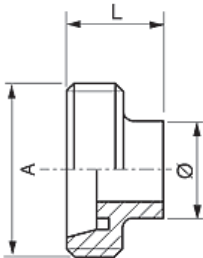
■ SMS fitting

Welding ferrule 316L st.st. (Ra<0.8µm)
Gasket E.P.D.M. (-40...+130°C)



■ Ensemble DIN 11851

Ferrule à souder Inox 316L (Ra<0,8µm)
Joint Nitrile (-20...+110°C)



DIN		Ø	L	A	Code
32		34	32	58x6F"	A3620-EP
40		40	33	65x6F"	A3621-EP
50		52	35	78x6F"	A3622-EP

■ DIN 11851 fitting

Welding ferrule 316L st.st. (Ra<0.8µm)
Gasket Nitrile (-20...+110°C)

